

**EXPECTED CUT-OFF (AFTER NEGATIVE MARKS WERE DEDUCTED)**

**Actually we do not know whether UPSC is going to have a Paper wise Cut-Off or not. In that case cut off for Paper-1 will be 72 Marks, for Paper-2 will be 112.5 Marks.**

**If there is no paper wise cut-off, then the aggregate Cut-Off will be around 195 Marks.**

**TEST BOOKLET  
GENERAL STUDIES  
PAPER – II**

**Time Allowed: Two Hours Max. Marks: 200**

**INSTRUCTIONS**

1. IMMEDIATELY AFTER THE COMMENCEMENT OF THE EXAMINATION, YOU SHOULD CHECK THAT THIS TEST BOOKLET DOES NOT HAVE ANY UNPRINTED OR TORN OR MISSING PAGES OR ITEMS, ETC. IF SO, GET IT REPLACED BY A COMPLETE TEST BOOKLET.
2. ENCODE CLEARLY THE TEST BOOKLET SERIES A, B, C OR D AS THE CASE MAY BE IN THE APPROPRIATE PLACE IN THE ANSWER SHEET.
3. You have to enter your Roll Number on the Test Booklet in the Box provided alongside.  
**DO NOT** write anything else on the Test Booklet.
4. This Test Booklet contains 80 items (questions). Each item is printed both in Hindi and English, except for Questions relating to English Language Comprehension which are in English only. Each item comprises four responses (answers). You will select the response which you want to mark on the Answer Sheet. In case, you feel that there is more than one correct response, mark the response which you consider the best. In any case, choose **ONLY ONE** response for each item.
5. You have to mark all your responses **ONLY** on the separate Answer Sheet provided. See directions in the Answer Sheet.
6. All items carry equal marks.
7. Before you proceed to mark in the Answer Sheet the response to various items in the Test Booklet, you have to fill in some particulars in the Answer Sheet as per instructions sent to you with your Admission Certificate.
8. After you have completed filling in all your response on the Answer Sheet and the examination has concluded, you should hand over to the Invigilator **only the Answer Sheet**. You are permitted to take away with you the Test Booklet.
9. Sheets for rough work are appended in the Test Booklet at the end.
10. **Penalty for wrong answers:**  
THERE WILL BE PENALTY FOR WRONG ANSWERS MARKED BY THE CANDIDATE EXCEPT FOR QUESTIONS FROM 73 TO 80, WHICH DO NOT CARRY ANY PENALTY FOR WRONG ANSWER.
  - i. There are four alternatives for the answer to every question. For each question which has a penalty for which a wrong answer has been given by the candidate, **one-third** of the marks assigned to that question will be deducted as penalty.
  - ii. If a candidate gives more than one answer, it will be treated as a **wrong answer** even if one of the given

answers happens to be correct and there will be same penalty as above to that question, if it has a penalty.

- iii. If a question is left blank, i.e., no answer is given by the candidate, there will be **no penalty** for that question.

**Directions for the following 8 (Eight) items:**

*Read each of the following two passages and answer the items that follow. Your answers to these items should be based on the passage only.*

**Passage 1**

For achieving inclusive growth there is a critical need to rethink the role of the state. The early debate among economists about the size of the Government can be misleading. The need of the hour is to have an enabling Government. India is too large and complex a nation for the State to be able to deliver all that is needed. Asking the Government to produce all the essential goods, create all the necessary jobs, and keep a curb on the prices of all goods is to lead to a large cumbersome bureaucracy and widespread corruption.

The aim must be to stay with the objective of inclusive growth that was laid down by the founding fathers of the nation and also to take a more modern view of what the state can realistically deliver.

This is what leads to the idea of an enabling state, That is a Government that does not try to directly deliver to the citizens everything that they need. Instead it (1) creates an enabling ethos for the market so that individual enterprise can flourish and citizens can, for the most part, provide for the needs of one another, and (2) steps in to help those who do not manage to do well for themselves, for there will always be individuals, no matter what the system, who need support and help. Hence we need a Government that, When it comes to the market, sets, effective, incentive – compatible rules and remains on the sidelines with minimal interference, and at the same time, plays an important role in directly helping the poor by ensuring that they get basic education and health services and receive adequate nutrition and food.

**1) According to the passage:**

1. The objectives of inclusive growth was laid down by the founding fathers of the nation.
2. Need of the hour is to have an enabling Government.
3. The Government should engage in maximum interference in market.
4. There is a need to change the size of the Government

Which of the statement given above are correct?

- a) 1 and 2 only      b) 2 and 3 only  
c) 1 and 4 only      d) 1, 2, 3 and 4 only

**2) According to the passage the strategy of inclusive growth can be effected by focusing on**

- a) Meeting all the needs of every citizens in the Country
- b) Increasing the regulations over the manufacturing sector.
- c) Controlling the distribution of manufactured goods
- d) Delivery of the basic services to the deprived sections of the society**

3) What constitutes an enabling Government?

- 1. A large Bureaucracy
- 2. Implementation of welfare programmes through representatives
- 3. Creating an ethos that helps individual enterprise.
- 4. Providing resources to those poor regarding basic services.
- 5. Offering direct help to the poor regarding basic services.

Select the correct answer from the codes given below:

- a) 1,2 and 3 only      b) 4 and 5 only
- c) 3, 4 and 5 only**      d) 1, 2, 3, 4, and 5

4) Why is the state unable to deliver "all that is needed"?

- 1. It does not have sufficient bureaucracy
- 2. It does not promote inclusive growth

Select the correct answer from the codes given below:

- a) 1 only**                      b) 2 only
- c) Both 1 and 2              d) Neither 1 nor 2

5) What is the essential message being conveyed by the author of the passage?

- a) The objectives of inclusive growth laid down by the founding fathers of the nation should be remembered
- b) The government need to make available more schools and health services
- c) The governments needs to establish markets and industries to meet the need of the poor strata of the society

**d) There is a need to rethink the role of the state in achieving inclusive growth**

**Passage 2**

The Concept of 'Creative society' refers to a phase of development of a society in which a large number of potential contradictions become articulate and active. This is most evident when oppressed social groups get politically mobilized and demand their rights. The upsurge of the peasants and tribal's, the movements for regional autonomy and self – determination, the environmental movements, and the women's movements in the developing countries are signs of emergence of creative society in contemporary times. The forms of social movements and their intensity may vary from country and place to place within a country. But the very presence of movements for social transformation in various spheres of a society indicates the emergence of a creative society in a country.

6) What does the author imply by "Creative Society"?

- 1. A society where diverse art forms and literary writings seek incentive.
- 2. A society where social inequalities are accepted as the norm.
- 3. A society where a large number of contradictions are recognized.
- 4. A society where the exploited and the oppressed groups grow conscious of their human rights and upliftment

Select the correct answer using the codes given below :

- a) 1, 2 and 3                      b) 4 only
- c) 3 and 4**                        d) 2 and 4

7) What according to the passage to the passage are the manifestations of social movements?

- 1. Aggressiveness and being incendiary
- 2. Instigation by external forces .
- 3. Quest for social equality and individuals freedom
- 4. Urge for granting privileges and self – respect to disparaged sections of the society.

Select the correct answers using the codes given below:

- a) 1 and 3 Only                  b) 2 and 4 only
- c) 3 and 4 only**                  d) 1, 2, 3 and 4

8) With reference to the passage, consider the following statements:

- 1. To be a creative society, it is essential to have a variety of social movements.
- 2. to be a creative society, it is imperative to have potential contradictions and conflicts

Which of the statements given above is/are correct?

- a) 1 only                              b) 2 only
- c) Both 1 and 2**                      d) Neither 1 nor 2

9) Consider the following three statements:

- 1. Only students can participate in the race.
- 2. Some participants in the race are girls.
- 3. All girls participants in the race are invited for coaching

Which one of the following conclusions can be drawn from the above statements?

- a) All participants in the race are invited for coaching
- b) All students are invited for coaching
- c) All participants in the race are students**
- d) None of the Statements (a), (b) and (c) given above is correct.

Directions for the following 2 (two) items

*Each of the following two items consists of four statements. Of these four statements, two cannot both be true, but both can be false. Study the statement carefully and identify the two that satisfy the above condition. Select the Correct answer using the codes given below each set of statements:*

10) Examine the following statements

- 1. All animals are carnivorous
- 2. Some animals are Carnivorous
- 3. Animals are not Carnivorous
- 4. Some animals are carnivorous

Codes:

- a) 1 and 3**      b) 1 and 2                  c) 2 and 3                  d) 3 and 4

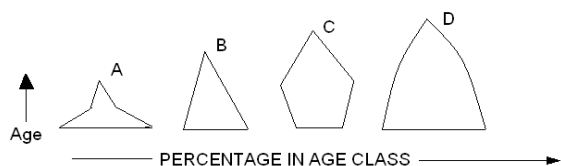
11) Examine the following statements:

- 1. All trains are run by diesel engine.
- 2. Some trains are run by diesel engine.
- 3. No train is run by diesel engine.
- 4. Some trains are not run by diesel.

Codes:

- a) 1 and 2      b) 2 and 3                  **c) 1 and 3**                  d) 1 and 4

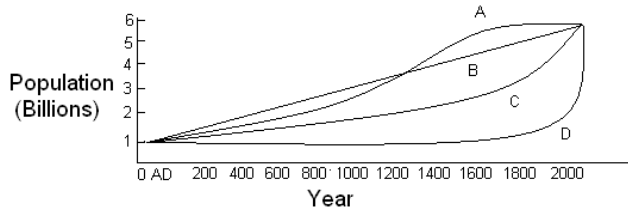
12) Consider the four age pyramids given below namely A, B, C and D representing four different countries



Which one of them indicates the declining population?

- a) A                      b) B                      **c) C**                      d) D

13) The following figure has four curves namely A, B, C and D Study the Figure and answer the item that follows



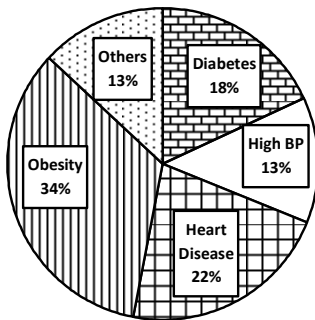
Which curve indicates the exponential growth?

- a) A      b) B      **c) C**      d) D

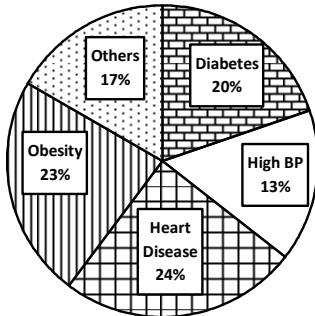
Directions for the following 2 (two) items:

The Following pie charts show the breakup of disease categories recorded in the patients from two towns, Town A and Town. Pie charts plot the disease categories as percentage of the total number of patients. Based on these, answer the two items that follow the Charts.

Distribution of disease in Town A



Distribution of Disease in Town - B



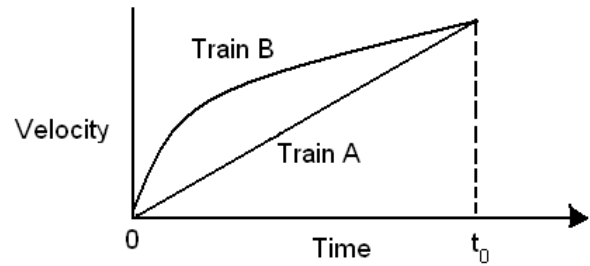
14) Which of the two towns has a higher number of persons with diabetes?

- a) Town A  
b) Town B  
c) Same in Town A and Town B  
**d) No inference can be drawn**

15) What can we say about persons with more than one disease form these graphs?

- a) There are likely to be persons with more than one disease in Town A  
**b) There are likely to be persons with more than one disease in Town B**  
c) There are likely to be persons with more than one disease in both Towns A and B  
d) No inference can be drawn

16) Consider the following Velocity – Time graph. It shows two trains starting simultaneously on parallel tracks



With reference to the above graph, which one of the following statements is not correct?

- a) Train B an initial acceleration greater than that of Train A  
b) Train B is faster than Train A at all times  
c) Both trains have the same velocity at time  $t_0$  units  
**d) Both Trains travel the same distance in time  $t_0$  units**

Directions for the following 6(Six) items:

Read each of the following two passages and answer the items that follow. Your answer to these items should be based on the passage only.

Passage – 1

Ecosystems provide people with a variety of goods and services; food, clean water, clean air, flood control, soil stabilization, pollination, climate regulation, spiritual fulfillment and aesthetic enjoyment to name just a few. Most of these benefits either are irreplaceable or the technology necessary to replace them is prohibitively expensive. For example, potable fresh water can be provided by desalinating sea – water, but only at great cost.

The rapidly exploding human population has greatly modified the Earth's ecosystem to meet their increased requirements of some of the goods and services, particularly foods, fresh water, timber, fibre and fuel. These modifications have contributed substantially to human well being and economic development. The benefits have not been equally distributed. Some people have actually been harmed by these changes. Moreover, Short term increases in some ecosystem goods and services have come at the cost of the long-term degradation of others. For example, efforts to increase the production of food and fibre have decreased the ability of some ecosystem to provide clean water, regulate flooding and support bio diversity

17) With reference to the passage, consider the following statements

Expanding human population has an adverse effect on:

1. Spiritual fulfillment
2. Aesthetic enjoyment
2. Potable fresh water
4. Production of food and fibre
5. Bio Diversity

Which of the statement given above are correct?

- a) 1, 2 and 3 only      b) 2, 4 and 5 only  
**c) 3 and 5 only**      d) 1, 2, 3, 4 and 5

18) The passage mentions that "Some people have actually been harmed by these changes". What does it imply?

1. The rapid expansion of population has adversely affected some people
2. Sufficient efforts have not been made to increase the production of food and fibre

3. In the short term some people may be harmed, but in the long term everyone will benefit from everyone will benefit from modifications in the Earth's ecosystem  
Which of the statements given above is/are correct?

- a) 1 only    b) 2  
c) 1 and 3    d) None of the statements given above

19) With reference to the passage, consider the following statements:

1. It is imperative to modify the Earth's ecosystem for the well being of mankind
2. Technology can never replace all the goods and services provided by ecosystems

Which of the statements given above is / are correct?

- a) 1 only    **b) 2 only**  
c) Both 1 and 2    d) Neither 1 nor 2

**Passage – 2**

*A moral act must be our own act, must spring from our own will. If we act mechanically, there is no moral content in our act. Such action would be moral, if we think it proper to act like a machine and do so. For, in doing so we use our discrimination. We should bear in mind the distinction between acting mechanically and acting intentionally. It may be moral of a kind to pardon a culprit. But the messenger carrying out the order of pardon plays only a mechanical part in the king's moral act. But if the messenger were to carry out the king's order considering it to be his duty, his action would be a moral one. How can a man understand morality who does not use his own intelligence and power of thought, but lets himself be swept along like a log of wood by a current? Sometimes a man defies convention and acts on his own with a view to absolute good.*

20) Which of the following statements best describe / describes the thought of the writer?

1. A moral act calls for using our discretion
2. Man should react to a situation immediately
3. Man must do his duty
4. Man should be able to defy convention in order to be moral.

Select the correct answer from the codes Given below

- a) 1 only    b) 1 and 3    c) 2 and 3    **d) 1 and 4**

21) Which of the following statements is the nearest definition of moral action according to the writer?

- a) It is a Mechanical action based on official orders from superiors
- b) It is an action based on our sense of discretion**
- c) It is a clever action based on the clarity of purpose
- d) It is a religious action based on understanding

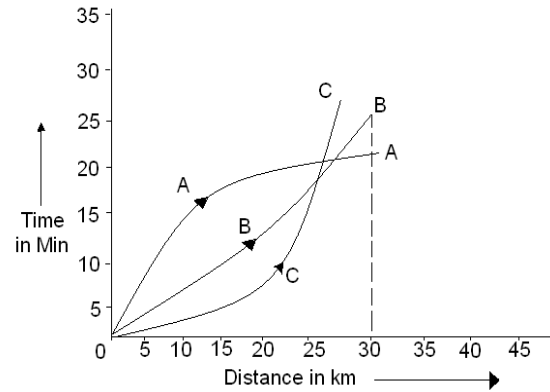
22) The passage contains a understand " lets himself be swept along like a log of wood by a current". Among the following statements which is/are nearest in meaning to this?

1. A person does not use his own reason.
2. He is susceptible to influence / pressure
3. He cannot withstand difficulties / challenges.
4. He is like a log of wood

Select the correct answer using the codes given below:

- a) 1 only    **b) 1 and 2**    c) 2 and 3    d) 1 and 4

23) Consider the following distance – time graph. The graph shows three athletes A, B and C running side by side for a 30 km race



With reference to the above graph, consider the following statements:

1. The races was won by A.
2. B was ahead of A up to 25 km mark.
3. C ran very slowly from the beginning

Which of the statements given above is/are correct?

- a) 1 only    **b) 1 and 2 only**    c) 2 and 3 only    d) 1, 2 & 3

24) Consider the Following Figures

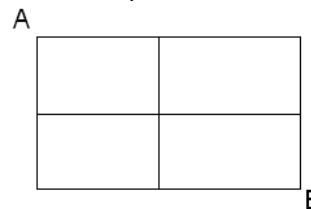
2	6	3	?
80	24	120	36

What is the missing number?

- a) 7    b) 8    **c) 9**    d) 10

25) Study the following figure:

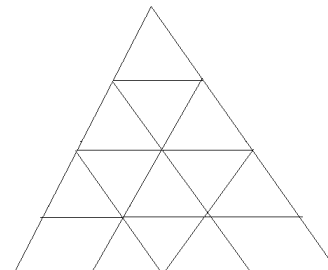
A person goes from A to B always moving to the right or downwards along the lines. How many different routes can he adopt?



Select the correct answer from the codes given below:

- a) 4    b) 5    **c) 6**    d) 7

26) Consider the following figure and answer the item that follows:



What is the total number of triangles in the above grid?

- a) 27    b) 26    **c) 23**    d) 22

27) The passage mentions that "this world evidently not meant for them". It refers to people who

1. Seek freedom from foreign domination
2. Live in starvation and misery
3. become revolutionaries

Which of the statements given above is/are correct?

- a) 1 and 2    **b) 2 only**    c) 2 and 3    d) 3 only

28) Consider the following assumptions:

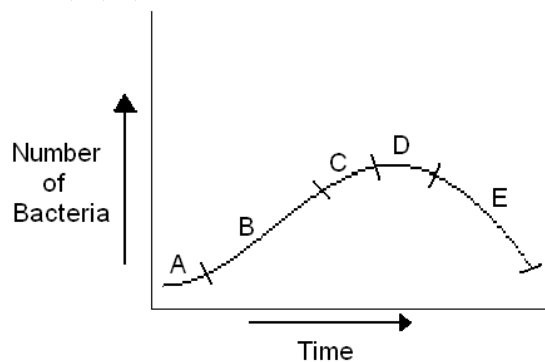
1. A country under foreign domination cannot indulge in spiritual pursuit
  2. Poverty is an impediment in the spiritual pursuit
  3. Subject peoples may become other - worldly
- With reference to the passage, which of the above assumptions is/ are valid?
- a) 1 and 2    b) 2 only    **c) 2 and 3**    d) 3 only

- 29) The passage thematically centres on
- a) the state of mind of oppressed people
  - b) starvation and misery
  - c) the growth of civilization
  - d) body, mind and spirit of people in general**

- 30) According to the passage, the torture of the mind and spirit is caused
- a) by the impact of foreign domination
  - b) by the desire to escape from foreign domination and find consolation in visions of past greatness
  - c) due to lack of equilibrium between an external life and an internal life**
  - d) due to one's inability to be either revolutionary or other worldly

**Directions for the following 3 (three) items:**  
 Read the passage given below, study the graph that follows and answer the three items given below the figure

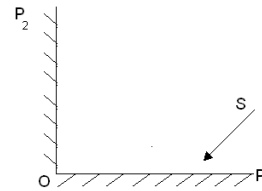
During a party, a person was exposed to contaminated water. A few days later, he developed fever and loose motions. He suffered for some days before going to a doctor for treatment. On starting the treatment, he soon became better and recovered completely a few days later. The following graph shows different phases of the person's disease condition as regions A, B, C, D and E of the curve



- 31) Which region / regions of the curve correspond / corresponds to incubation phase of the infection?
- a) **A only**    b) **B only**    c) B and C
  - d) No part of the curve indicates the incubation phase
- The incubation period is the amount of time between infection with a virus or bacteria to the start of symptoms.**
- 32) Which region of the curve indicates that the person began showing the symptoms of infection?
- a) A    b) B    **c) C**    d) D
- 33) Which region of the curve indicates that the treatment yielded effective relief?
- a) C    b) D    **c) E**    d) The curve does not indicate the treatment
- 34) There are four routes to travel from city A and City B and Six routes from city B to City C. How many routes are possible to travel from the city A to City C?
- a) 24**    b) 12    c) 10    d) 8

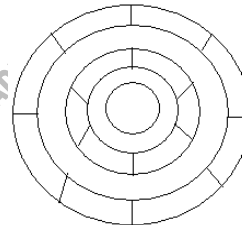
- 35) A contract on construction job specifies a penalty for delay in completion of the work beyond a certain date is as follows: ` 200 for the first day, ` 250 for the second day, ` 300 for the third day etc., the penalty for each succeeding day being ` 50 more than that of the preceding day. How much penalty should the contractor pay if he delays the work by 10 days?
- a) ` 4950    **b) ` 4250**    c) ` 3600    d) ` 650

- 36) Consider the figure given below and answer the item that follows:



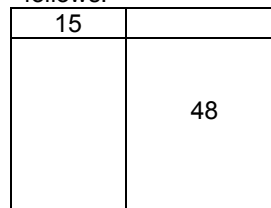
- In figure shown above,  $OP_1$   $OP_2$  are two plane mirrors kept perpendicular to each other. S is the direction of a beam of light falling on the mirror  $OP_1$ . The direction of the reflected beam of light from the mirror  $OP_2$  will be
- a) Perpendicular to the direction S
  - b) At  $45^\circ$  to the direction S
  - c) Opposite and parallel to the direction S**
  - d) At  $60^\circ$  to the direction S

- 37) Consider the following figure and answer the item that follows:



- What is the minimum number of different colours required to paint the figure given above such that no two adjacent regions have the same colour?
- a) 3**    b) 4    c) 5    d) 6

- 38) Consider the following figure and answer the item that follows:



- A square is divided into four rectangles as shown above. The lengths of the sides of rectangles are natural numbers. The areas of two rectangles are indicated in the figure. What is the length of each side of the square?
- a) 10    **b) 11**    c) 15
  - d) Cannot be determined as the given data are sufficient

- 39) A person has only Rs. 1 and Rs.2 coins with her. If the total number of coins that she has is 50 and the amount of money with her is Rs.75, then the number of Re. 1 and Rs.2 coins are, respectively
- a) 15 and 35    b) 35 and 15
  - c) 30 and 20    **d) 25 and 25**

- 40) Three persons start walking together and their steps measure 40 cm respectively. What is the minimum

distance each should walk so that each should walk so that each can cover the same distance in complete steps?

- a) **25 m 20 cm**      b) 50 m 40 cm  
c) 75 m 60 cm      d) 100 m and 80 cm

- 41)** If a bus travels 160km in 4 hours and a train travels 220 km in 5 hours at uniform speeds, then what is a ratio of the distances travelled by them in one hour?  
a) 8:5      **b) 5:8**      c) 4:5      d) 1:2
- 42)** There are 100 students in a particular class. 60% students play cricket, 30% student play football and 10% students play both the games. What is the number of students who play neither cricket nor football?  
a) 25      **b) 20**      c) 18      d) 15
- 43)** A village having a population of 4000 requires 150 litres of water per head per day. It has a tank measuring 20m x 15 m x 6 m. the water of this tank will last for  
a) 2 days      **b) 3 days**      c) 4 days      d) 5 days

Directions for the following 4 (four) items:

Read the following passage and answer the items that follow. Your answers to these items should be based on the passage only.

**Passage**

A species that exerts an influence out of proportion to its abundance in an ecosystems is called a keystone species. The keystone species may influence both the species richness of communities and the flow of energy and materials through ecosystems. The sea star *Pisaster ochraceus*, which lives in rocky intertidal ecosystems on the pacific coast of North America, is also an example of a keystone species. Its preferred prey is the mussel *Mytilus Californianus*. In the absence of sea stars, these mussels crowd out their competitors in a narrow belt of the intertidal zone. By consuming mussels, sea star creates bare spaces that are taken over by a variety of other species.

A study at the university of Washington demonstrated the influence of *Pisaster* on Species richness by removing sea stars from selected parts of the intertidal zone repeatedly over a period of five years. Two major changes occurred in the areas from which sea stars were removed. First, the lower edge of the mussel bed extended farther down into the intertidal zone, showing that sea stars are able to eliminate mussels completely where they are covered with water most of the time second and more dramatically, 28 species of animals and algae disappeared from the sea star removal zone. Eventually only *Mytilus*, the dominant competitor occupied the entire substratum. Through its effect on competitive relationships, predation by *Pisaster* largely determines which species live in these rocky intertidal ecosystems,

- 44)** What is the crux of the passage?  
a) Sea Star has a preferred prey  
b) A preferred prey determines the survival of a keystone species.  
**c) Keystone species ensures species**  
d) Sea star is the only keystone species on the pacific coast of North America
- 45)** With reference to the passage, consider the following statements:  
1. Mussels are generally the dominant species in intertidal ecosystems

2. The survival of sea stars is generally determined by the abundance of mussels.

Which of the statements given above is are correct ?

- a) **1 only**      b) 2 only  
c) Both 1 and 2      d) Neither 1 nor 2

- 46)** Which of the following is/are implied by the passage?  
1. Mussels are always hard competitors for sea stars  
2. Sea stars of the Pacific coast have reached the climax of their evolution  
3. Sea stars constitute an important component in the energy flow in intertidal ecosystems  
Which of the statements given above is/are correct?  
a) 1 and 2      b) 2 only      c) 1 and 3      **d) 3 only**
- 47)** Consider the following assumptions  
1. The food chains/food web in an ecosystem are influenced by keystone species.  
2. The presence of keystone species is a specific characteristics of aquatic ecosystems  
3. If the keystone species is completely removed from an ecosystem, it will lead to the collapse of the ecosystems  
With reference to the passage, which of the above assumptions is/are valid?  
a) 1 only      b) 2 and 3 only      **c) 1 and 3 only**      d) 1,2and3

- 48)** Consider the following argument:  
"In order to be a teacher one must graduate from college. All poets are poor. Some Mathematicians are poets. No College graduate is poor.  
Which one of the following is not a valid conclusion regarding the above argument?  
a) Some Mathematicians are not teachers  
**b) Some teachers are not Mathematicians**  
c) Teachers are not poor  
d) Poets are not teachers

- 49)** A student on her first 3 test received an average score of N points. If she exceed her previous average score by 20 points on her fourth test, then what is the average score for the first 4 test?  
a) N+20      b) N+20      c) N+4      **d) N+5**

- 50)** In a group of persons, 70% of the persons are male and 30% of the persons are married. If two – seventh of the males are married, what fraction of the females is single?  
a) 2/7      b) 1/3      c) 3/7      **d) 2/3**

- 51)** The houses of A and B face each other on a road going north – south, A's being on the western side. A comes out of his house, turns left, travels 5 km, turns right, travels 5 km to the front of D's house. B does exactly the same and context, which one of the following statements is correct?  
a) C and D live on the same street  
b) C's house faces south  
**c) The house of C and D are less than 20 km apart**  
d) None of these

Directions for the following 5 (Five) items:

Read the following passage and answer the items that follow. Your answers to these items that follow. Your answers to these items should be based on the passage only.

**Passage**

Now India's Children have a right to receive at least eight years of education, the gnawing question is whether it will remain on paper or become a reality. One hardly needs a reminder that this right is different from

*the others enshrined in the constitution, that the beneficiary – a six year old child cannot demand it, nor can she or he fight a legal battle when the right is denied or violated. In all cases, it is the adult society which must act on behalf of the child. In another peculiarity, where a child's right to education is denied, no compensation offered later can be adequate or relevant. This is so because childhood does not last. If a legal battle fought on behalf of a child is eventually won, it may be of little use to the boy or girl because the opportunity missed at school during childhood cannot serve the same purpose later in life. This may be painfully true for girls because our society permits them only a short childhood if at all. The right to Education ( RTE) has become law at a point in India's History when the ghastly practice of female infanticide has resurfaced in the form of foeticide. This is "Symptomatic of a deeper turmoil". In society which is compounding the traditional obstacles to the education of girls. Tenacious prejudice against the intellectual potential of girls runs across our cultural diversity and the system of education has not been able to address it.*

- 52) With reference to the passage, consider the following statements:  
 1. When children are denied education adult society does not act on behalf of them  
 2. Right to Education as a law cannot be enforced in the country  
 Which one of the statements given above is/are correct  
 a) 1 only                      b) 2 only  
 c) Both 1 and 2              **d) Neither 1 nor 2**
- 53) According to the passage What could be the traditional obstacles to the education of girls?  
 1. Inability of parents to fight a legal battle when the right to Education is denied to their children  
 2. The traditional way of thinking about girls role in society  
 3. The prejudice against the intellectual potential of girls  
 4. Improper system of education  
 Select the Correct answer from the codes given below:  
 a) 1 and 2 only                      **b) 2, 3 and 4 only**  
 c) 1, 3 and 4 only                  d) 1, 2, 3 and 4
- 54) On the basis of the passage, consider the following statements:  
 1. Right to education is legal right and not a fundamental right  
 2. For realizing the goal of universal education, the education system in the country must be made identical to that of developed countries.  
 Which of the statements given below is /are correct  
**a) 1 only**                      b) 2 only  
 c) Both 1 and 2              **d) Neither 1 nor 2**
- 55) Which one of the following statements conveys the key message of the passage?  
 a) India has declared that education is compulsory for its children  
 b) Adult society is not keen on implementing the right to education  
**c) The right to education, particularly of a girl child, need to be safeguard**  
 d) The system of education should address the issue of right to education
- 56) Which one of the statements conveys the inference of the passage?

- a) The society has a tenacious prejudice against the intellectual potential of girls  
 b) Adults cannot be relied upon to fight on behalf of children for their Right to education  
 c) The legal fight to get education for children is often protracted and prohibitive  
**d) There is no sufficient substitute for education received in childhood**

Read the following passage and answer the 3 (three) items that follow:

A, B, C, D and E are members of the same family. There are two fathers, two sons, two wives, three males and two females. The teacher was the wife of a lawyer who was the son of a doctor. E is not a male, neither also a wife of a professional. C is the youngest person in the family and D is the eldest. B is a male.

- 57) How is D related to E?  
**a) Husband**                      b) Son  
 c) Father                          d) Wife
- 58) Who are the females in the group?  
 a) C and E    b) C and D    **c) E and A**                  d) D and E
- 59) Whose wife is the teacher?  
 a) C                      b) D                      c) A                      **d) B**

Read the following passage and answer the 3 (three) items that follow:

In a survey regarding a proposed measure to be introduced, 2878 persons took part of which 1652 were males. 1226 persons voted against the proposal of which 796 were males. 1425 persons voted for the proposal. 196 females were undecided.

- 60) How many females voted for the proposal?  
 a) 430                      **b) 600**                      c) 624                      d) 640
- 61) How many males were undecided?  
**a) 31**                      b) 227                      c) 426                      d) 581
- 62) How many females were not in favour of the proposal?  
**a) 430**                      b) 496                      c) 586                      d) 1226
- 63) In a queue, Mr. X is fourteenth from the front and Mr. Y is seventeenth from the end, while Mr. Z is exactly in between Mr. X and Mr. Y. If Mr. X is ahead of Mr. Y and there are 48 persons in the queue, how many persons are there between Mr. X and Mr. Z?  
 a) 6                      b) 7                      **c) 8**                      d) 9

Directions for the following 9 (nine) items:

The following nine items (Questions 64 to 72) are based on three passages in English to test the comprehension of English language and therefore these items do not have Hindi version. Read each passage and answer the items that follow.

**Passage-I**

He walked several miles that day but could not get anything to eat or drink except some dry bread and some water, which he got from cottagers and farmers. As night fell, he slept under a haystack lying in a meadow. He felt frightened at first, for the wind blew awfully over the empty fields. He felt cold and hungry, and was feeling more lonely than he had ever felt before. He, however, soon fell asleep, being much tired with his long walk. When he got up next day, he was feeling terribly hungry so he purchased a loaf of bread with a few coins that he had.

- 64) When the night fell, he slept

- a) in the open field
- b) under a pile of dry grass**
- c) in a farmer's cottage
- d) under a tree

65) He soon fell asleep because

- a) he was exhausted**
- b) he was all alone
- c) he had not slept for days
- d) he was very frightened

66) With reference to the passage, consider the following statements:

1. He was walking through the countryside.
  2. The cottagers and farmers gave him enough food so that he could sleep at night without feeling hungry.
- Which of the statements given above is/are correct?

- a) 1 only**
- b) 2 only
- c) Both 1 and 2
- d) Neither 1 nor 2

### Passage-II

I opened the bag and packed the boots in; and then just as I was going to close it, a horrible idea occurred to me. Had I packed my toothbrush? I don't know how it is, but I never do know whether I've packed my toothbrush.

My toothbrush is a thing that haunts me when I'm travelling, and makes my life a misery. I dream that I haven't packed it, and wake up in a cold perspiration, and get out of bed and hunt for it. And, in the morning, I pack it before I have used it, and it is always the last thing I turn out of the bag; and then I repack and forget it, and have to rush upstairs for it at the last moment and carry it to the railway station, wrapped up in my pocket-handkerchief.

67) When he was going to close the bag, the idea that occurred to him was

- a) unpleasant**
- b) sad
- c) fantastic
- d) amusing

68) What makes his life miserable whenever he undertakes travelling?

- a) Going to railway station
- b) Forgetting the toothbrush**
- c) Packing his bag
- d) Bad dreams

69) His toothbrush is finally

- a) in his bag
- b) in his bed
- c) in his handkerchief**
- d) lost

### Passage-III

In spring, polar bear mothers emerge from dens with three month old cubs. The mother bear as fasted for as long as eight months but that does not stop the young from demanding full access to her remaining reserves. If there are triplets, the most persistent stands to gain an extra meal and it may have the meal at the expense of others. The smallest of the litter forfeits many meals to stronger siblings. Females are protective of their cubs but tend to ignore family rivalry over food. In 21 years of photographing polar bears, I've only once seen the smallest of triplets survive till autumn.

70) Female polar bears give birth during

- a) spring
- b) summer
- c) autumn
- d) winter**

71) Mother bear

- a) takes sides over cubs
- b) lets the cubs fend for themselves**
- c) feeds only their favourites
- d) sees that all cubs get an equal share

72) With reference to the passage, the following assumptions have been made:

1. Polar bears fast as long as eight months due to non-availability of prey
2. Polar bears always give birth to triplets.

Which of the assumptions given above is/are valid?

- a) 1 only
- b) 2 only
- c) Both 1 and 2
- d) Neither 1 nor 2**

### Directions for the following 8 (eight) items:

Given below are eight items. Each item describes a situation and is followed by four possible responses. Indicate the response you find most appropriate. Choose only one response for each item. The responses will be evaluated based on the level of appropriateness for the given situation.

**Please attempt all the items. There is no penalty for wrong answers for these eight items.**

73) You have been asked to give an explanation for not attending an important official meeting. Your immediate boss who has not informed you about the meeting is now putting pressure on you not to place an allegation against him/her. You would

- a) send a written reply explaining the fact.**
- b) seek an appointment with the top boss to explain the situation.
- c) admit your fault to save the situation
- d) put the responsibility on the coordinator of the meeting for not informing

74) A local thug (bad element) has started illegal construction on your vacant plot. He has refused your request to vacate and threatened you of dire consequences in case you do not sell the property at a cheap price to him. You would

- a) sell the property at a cheap price to him
- b) go to the police for necessary action**
- c) ask for help from your neighbours
- d) negotiate with the goon to get a higher price.

75) You have to accomplish a very important task for your Headquarters within the next two days. Suddenly you meet with an accident. Your office insists that you complete the task. You would

- a) ask for an extension of deadline.
- b) inform Headquarters of your inability to finish on time
- c) suggest alternate person to headquarters who may do the needful**
- d) stay away till your recover

76) You are an officer-in-charge for providing basic medical facilities to the survivors of an earthquake affected area. Despite your best possible effort, people put allegations against you for making money out of the funds given for relief. You would

- a) let an enquiry be set up to look into the matter**
- b) ask your senior to appoint some other person in your place
- c) not pay attention to allegations
- d) stop undertaking any initiative till the matter is resolved

77) You have been made responsible to hire boats at a short notice to be used for an area under flood. On seeing the price mentioned by the boat owners you

found that the lowest price was approximately three times more than the approved rate of the Government. You would

- reject the proposal and call for a fresh price.
- accept the lowest price**
- refer the matter to the Government and wait
- threaten the boat owners about a possible cancellation of the licence.

**78)** You are the officer-in-charge of a village administering distribution of vaccine in an isolated epidemic hit village, and you are left with only one vaccine. There is a requirement of that vaccine from the Gram Pradhan and also a poor villager. You are being pressurized by the Gram Pradhan to issue the vaccine to him. You would

- initiate the procedure to expedite the next supply without issuing the vaccine to either.
- arrange vaccine for the poor villager from the distributor of another area.
- ask both to approach a doctor and get an input about the urgency.**
- arrange vaccine for the Gram Pradhan from the distributor of another area.

**79)** You have taken up a project to create night-shelters for homeless people during the winter season. Within a week of establishing the shelters, you have received complaints from the residents of the area about the increase in theft cases with a demand to remove the shelters. You would

- ask them to lodge a written complaint in the police station.
- assure residents of an enquiry into the matter**
- ask residents to consider the humanitarian effort made.
- continue with the project and ignore their complaint.

**80)** You, as an administrative authority, have been approached, by the daughter-in-law of an influential person regarding harassment by her in-laws on account of insufficient dowry. Her parents are not able to approach you because of social pressures. You would

- call the in-laws for an explanation**
- counsel the lady to adjust, given such a circumstance.
- take action after her parents approach you
- ask her to lodge a complaint with the police.

### UPSC MAINS COACHING.

Optional Botany by Prof. Palanisamy.  
Optional Zoology by Dr. Sankara Saravanan.  
Optional Tamil Literature by Dr. Sankara Saravanan.

## LIVE ONLINE CLASSES

### ADVANTAGES - REQUIREMENTS

First Time in INDIA, RADIAN IAS ACADEMY is conducting every classes conducted here at CHENNAI Institute also streaming **LIVE ONLINE**. (To Watch a MODEL FREE Online Class, send Mail to [r.rajaboopathy@yahoo.in](mailto:r.rajaboopathy@yahoo.in))

**1) All the ONLINE CLASSES are crystal Clear LIVE Audio and Video Classes & Lesser FEE. You can always attend one or two ONLINE Classes FREE.**

**2) To attend ONLINE Classes you should have a valid email ID.**

**3) If you miss any of the class then you can watch those class recorded any time(24x7)with our permission.**

**4) ONLINE students receive all materials and Test Papers & Magazine in a pdf file.**

**5) You can save travelling Time & Very useful for the long distance students.**

**6) Students interact without hesitation in online classes, the questions are answered instantly be faculty.**

**7) All TNPSC Classes in Bi-Lingual, UPSC and BANK Classes in English only.**

**8) You can pay by EITHER by ONLINE TRANSFER (or) CASH REMITTANCE (If you pay CASH at BANK's Counter, then Add Rs.100 Extra) Account details Below.**

### TO ATTEND ONLINE CLASSES YOU SHOULD POSSESS THE FOLLOWING.

**1) Your Internet Speed should be at least 256 kbps. (Better if it is 512 kbps)**

**2) You should have latest Mozilla Firefox Browser or Internet Explorer or Google Chrome.(All Freely Available)**

**3) You must have a latest Adobe Flash Player & Java.(Freely Available).**

**4) You should have a good Speaker (or) a head set. (Mic is Optional but not necessary).**

**5) Those who are interested to attend classes, must have a valid e-mail ID, then for one time registration first send a mail to [r.rajaboopathy@yahoo.in](mailto:r.rajaboopathy@yahoo.in)**

### GROUP-1 MAINS – 2011 CLASS

#### WEEK-END CLASSES

Sat-(3PM-6PM)&Sundays 10AM-5PM. From July 2<sup>nd</sup>  
For Details, Visit  
<http://radianiasacademy.org/news/group.1.2011.mains.html>

### FREE GK SMS ALERTS IAS Exam

Create a sms from your mobile **JOIN RADIANIAS**  
and send to **9870807070**

### FREE SMS ALERTS FOR BANK Exams

Create a sms from your mobile **JOIN RADIANAPTY**  
and send to **9870807070**

### FREE GK SMS ALERTS TNPSC Exam

Create a sms from your mobile **JOIN RADIANTNPSC**  
and send to **9870807070**